

Three Phase - General Purpose

Three Phase: 3 kVA - 9 kVA Epoxy Encapsulated Series 76 ISO-Shield

Features



- Electrostatic shield between primary and secondary windings provides cleaner output voltage and helps to reduce spikes and transients.
- Epoxy-silica encapsulated core and coil provides a transformer particularly well suited for harsh commercial and industrial applications.
- Copper windings and copper lead wire terminations used throughout.
- UL Class 180°C insulation system with a 115°C temperature rise at a maximum ambient of 40°C.
- NEMA Type 3R, wall mount enclosure suitable for indoor or outdoor use. No extra rainshields required for outdoor use.
- Multiple knockouts provide convenient conduit



3 - 9 kVA

- entry and exit locations through the front and bottom access wiring compartment covers.
- Ground studs provided for bonding compatibility with both metallic and nonmetallic conduit.
- Nonstandard designs are available by consulting the factory or your Dongan® representative.

Three Phase: 15 kVA - 150 kVA Ventilated Series 63 ISO-Shield

Features



- Electrostatic shield between primary and secondary windings provides cleaner output voltage and helps to reduce spikes and transients.
- Aluminum windings connect to bus bar style terminations equipped with NEMA standard holes for compression style or ring terminals.
- UL Class 220°C insulation system with 150°C temperature rise at full load and a maximum ambient of 40°C.
- NEMA Type 3R, ventilated, cabinet style, floor mount enclosure suitable for indoor or outdoor use. No extra rainshields required for outdoor use.
- Vibration dampening pads provide quiet operation.
- Wall Mounting brackets are available in sizes up



15 - 150 kVA

- to 75 kVA.
- Ground studs provided for bonding compatibility with both metallic and nonmetallic conduit.
- Core and coil and nonstandard designs are available by consulting the factory or your Dongan® representative.

Three Phase: 3 kVA - 9 kVA Ventilated

Features



- Copper windings and copper lead wire terminations used throughout.
- UL Class 180°C insulation system with a 115°C temperature rise at a maximum ambient of 40°C.
- NEMA Type 3R, wall mount enclosure suitable for vertical mount in indoor or outdoor applications. No extra rainshields required for outdoor use.
- Multiple knockouts provide convenient conduit entry and exit locations through the side and back of the wiring compartment.
- Ground studs provided for bonding compatibility with both metallic and nonmetallic conduit.
- Slim profile provides convenient mounting for space limited areas.

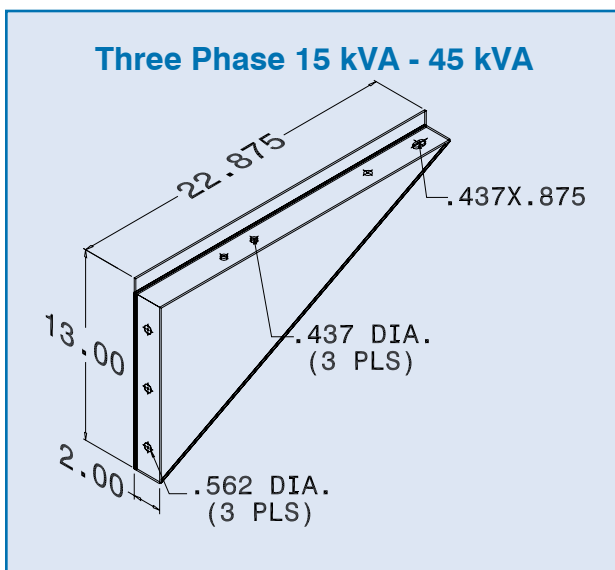


3 - 9 kVA

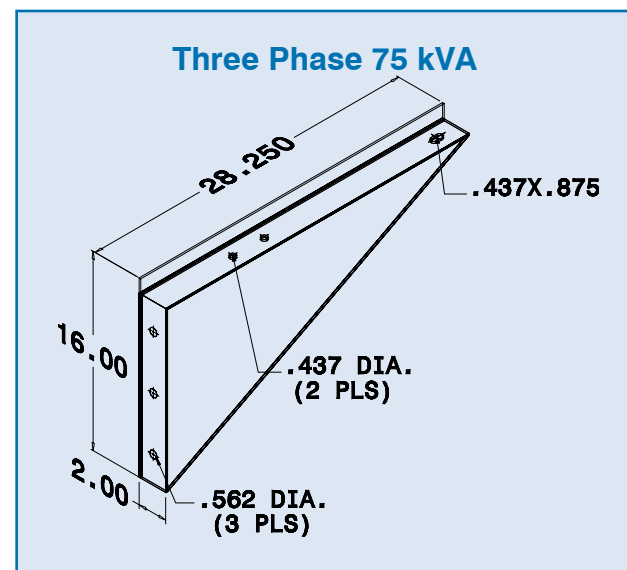
- Neutral (X0) provided on three phase, 4 wire transformers.

Three Phase: 15 kVA - 75 kVA

63 Series Optional Wall Mounting Brackets



Catalog No. BR - 890



Catalog No. BR - 892

Three Phase - General Purpose

**Primary Volts 480 Delta,
Secondary Volts 240 Delta, 60 Hz**
May be used on a 480Y / 277 Volt Supply

| General Information | | | Winding Specifications | | | | Dimensions | | | |
|---------------------|-------------------|-------------|------------------------|--------------|------|------------------------|-------------|------------|------------|-----------------|
| kVA* Cap. | Catalog Number | Wgt. Lbs | Taps | Maximum Amps | | Conn Dia. Pg. 32 | Height A | Width B | Depth C | Outline Dwg. |
| | | | | Pri. | Sec. | | | | | |
| 3.0 | 76-0203SH | 140 | 0 | 3.6 | 7.2 | 2 | 14.00 | 16.00 | 7.75 | 1 |
| 6.0 | 76-0206SH | 212 | 0 | 7.2 | 14.4 | 2 | 18.00 | 20.00 | 9.50 | 1 |
| 9.0 | 76-0209SH | 265 | 0 | 10.8 | 21.6 | 2 | 18.00 | 20.00 | 9.50 | 1 |
| 15.0 | 43-6215SH** | 230 | 6 | 18 | 36 | 3 | 23.50 | 18.88 | 18.50 | 2 |
| 25.0 | 43-6225SH** | 255 | 6 | 30 | 60 | 3 | 29.00 | 24.25 | 20.88 | 2 |
| 30.0 | 43-6230SH** | 326 | 6 | 36 | 72 | 3 | 29.00 | 24.25 | 20.88 | 2 |
| 45.0 | 43-6245SH** | 460 | 6 | 54 | 108 | 3 | 29.00 | 24.25 | 20.88 | 2 |
| 75.0 | 43-6275SH** | 722 | 6 | 90 | 180 | 3 | 32.00 | 27.25 | 26.25 | 2 |
| 112.5 | 43-62112SH** | 1001 | 6 | 135 | 270 | 3 | 41.00 | 34.25 | 26.75 | 2 |
| 150.0 | 43-62150SH** | 1255 | 6 | 180 | 361 | 3 | 41.00 | 34.25 | 26.75 | 2 |

*Transformers 15 kVA through 150 kVA are equipped with a 120 volt lighting tap. Lighting tap capacity is limited to 5% of nameplate rating distributed equally on either side of XO.
** Meets DOE TP-1 requirements

**Primary Volts 480 Delta,
Secondary Volts 208Y / 120, 60 Hz**
May be used on a 480Y / 277 Volt Supply

| General Information | | | Winding Specifications | | | | Dimensions | | | |
|---------------------|-------------------|-------------|------------------------|--------------|------|------------------------|-------------|------------|------------|-----------------|
| kVA Cap. | Catalog Number | Wgt. Lbs | Taps | Maximum Amps | | Conn Dia. Pg. 32 | Height A | Width B | Depth C | Outline Dwg. |
| | | | | Pri. | Sec. | | | | | |
| 3.0 | 76-0303SH | 140 | 0 | 3.6 | 8.3 | 5 | 14.00 | 16.00 | 7.75 | 1 |
| 6.0 | 76-0306SH | 212 | 0 | 7.2 | 16.6 | 5 | 18.00 | 20.00 | 9.50 | 1 |
| 9.0 | 76-0309SH | 265 | 0 | 10.8 | 25 | 5 | 18.00 | 20.00 | 9.50 | 1 |
| 15.0 | 43-6315SH* | 230 | 6 | 18 | 41 | 6 | 23.50 | 18.88 | 18.50 | 2 |
| 25.0 | 43-6325SH* | 255 | 6 | 30 | 69 | 6 | 29.00 | 24.25 | 20.88 | 2 |
| 30.0 | 43-6330SH* | 326 | 6 | 36 | 83 | 6 | 29.00 | 24.25 | 20.88 | 2 |
| 45.0 | 43-6345SH* | 460 | 6 | 54 | 125 | 6 | 29.00 | 24.25 | 20.88 | 2 |
| 75.0 | 43-6375SH* | 722 | 6 | 90 | 208 | 6 | 32.00 | 27.25 | 26.25 | 2 |
| 112.5 | 43-63112SH* | 1001 | 6 | 135 | 312 | 6 | 41.00 | 34.25 | 26.75 | 2 |
| 150.0 | 43-63150SH* | 1255 | 6 | 180 | 416 | 6 | 41.00 | 34.25 | 26.75 | 2 |

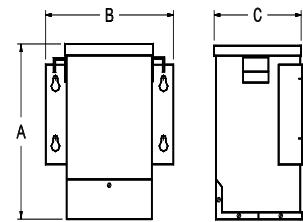
* Meets DOE TP-1 requirements

Connection Diagrams may be found on Pg. 32

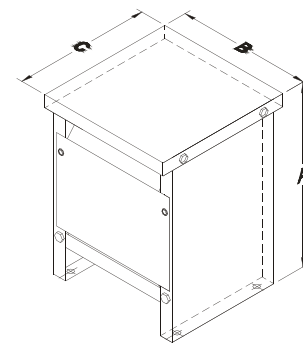
Tap Configurations:

- 0 = No Taps
- 2 = 1 - 5% FCAN, 1 - 5% FCBN
- 4 = 2 - 2½% FCAN, 2 - 2½% FCBN
- 6 = 2 - 2½% FCAN, 4 - 2½% FCBN

Dimensions & weights may change. Consult factory for certified drawings.



Drawing 1
3 - 9 kVA
Wall Mount - Encapsulated - NEMA Type 3R



Drawing 2
15 - 150 kVA
Floor Mount - Ventilated - NEMA Type 3R

Three Phase - General Purpose

Primary 600 Delta, Secondary 240 Delta, 60 Hz

| General Information | | | Winding Specifications | | | | Dimensions | | | |
|---------------------|-------------------|-------------|------------------------|--------------|------|------------------------|-------------|------------|------------|-----------------|
| kVA* Cap. | Catalog Number | Wgt. Lbs | Taps | Maximum Amps | | Conn Dia. Pg. 33 | Height A | Width B | Depth C | Outline Dwg. |
| | | | | Pri. | Sec. | | | | | |
| 3.0 | 76-01003SH | 140 | 0 | 2.8 | 7.2 | 9 | 14.00 | 16.00 | 7.75 | 1 |
| 6.0 | 76-01006SH | 212 | 0 | 5.7 | 14.4 | 9 | 18.00 | 20.00 | 9.50 | 1 |
| 9.0 | 76-01009SH | 265 | 0 | 8.6 | 21.6 | 9 | 18.00 | 20.00 | 9.50 | 1 |
| 15 | 43-61015SH** | 230 | 6 | 14.4 | 36.1 | 10 | 23.50 | 18.88 | 18.50 | 2 |
| 25 | 43-61025SH** | 255 | 6 | 24.0 | 60 | 10 | 29.00 | 24.25 | 20.88 | 2 |
| 30 | 43-61030SH** | 326 | 6 | 28.9 | 72 | 10 | 29.00 | 24.25 | 20.88 | 2 |
| 45 | 43-61045SH** | 460 | 6 | 43.3 | 108 | 10 | 29.00 | 24.25 | 20.88 | 2 |
| 75 | 43-61075SH** | 722 | 6 | 72 | 180 | 10 | 32.00 | 27.25 | 26.25 | 2 |
| 112.5 | 43-610112SH** | 1001 | 6 | 108 | 270 | 10 | 41.00 | 34.25 | 26.75 | 2 |
| 150 | 43-610150SH** | 1255 | 6 | 144 | 361 | 10 | 41.00 | 34.25 | 26.75 | 2 |

*Transformers 15 kVA through 150 kVA are equipped with a 120 volt lighting tap. Lighting tap capacity is limited to 5% of nameplate rating distributed equally on either side of XO.
** Meets DOE TP-1 requirements

Primary 600 Delta, Secondary 208Y / 120, 60 Hz

| General Information | | | Winding Specifications | | | | Dimensions | | | |
|---------------------|-------------------|-------------|------------------------|--------------|------|------------------------|-------------|------------|------------|----------------|
| kVA Cap. | Catalog Number | Wgt. Lbs | Taps | Maximum Amps | | Conn Dia. Pg. 33 | Height A | Width B | Depth C | Outline No. |
| | | | | Pri. | Sec. | | | | | |
| 3.0 | 76-0003SH | 140 | 0 | 2.8 | 8.3 | 11 | 14.00 | 16.00 | 7.75 | 1 |
| 6.0 | 76-0006SH | 212 | 0 | 5.7 | 16.6 | 11 | 18.00 | 20.00 | 9.50 | 1 |
| 9.0 | 76-0009SH | 265 | 0 | 8.6 | 25 | 11 | 18.00 | 20.00 | 9.50 | 1 |
| 15 | 43-6015SH* | 230 | 6 | 14.4 | 41.6 | 12 | 23.50 | 18.88 | 18.50 | 2 |
| 25 | 43-6025SH* | 255 | 6 | 24.0 | 69 | 12 | 29.00 | 24.25 | 20.88 | 2 |
| 30 | 43-6030SH* | 326 | 6 | 28.9 | 83 | 12 | 29.00 | 24.25 | 20.88 | 2 |
| 45 | 43-6045SH* | 460 | 6 | 43.3 | 125 | 12 | 29.00 | 24.25 | 20.88 | 2 |
| 75 | 43-6075SH* | 722 | 6 | 72 | 208 | 12 | 32.00 | 27.25 | 26.25 | 2 |
| 112.5 | 43-60112SH* | 1001 | 6 | 108 | 312 | 12 | 41.00 | 34.25 | 26.75 | 2 |
| 150 | 43-60150SH* | 1255 | 6 | 144 | 416 | 12 | 41.00 | 34.25 | 26.75 | 2 |

* Meets DOE TP-1 requirements

Primary 240 Delta, Secondary 208Y / 120, 60 Hz

| General Information | | | Winding Specifications | | | | Dimensions | | | |
|---------------------|-------------------|-------------|------------------------|--------------|------|------------------------|-------------|------------|------------|-----------------|
| kVA Cap. | Catalog Number | Wgt. Lbs | Taps | Maximum Amps | | Conn Dia. Pg. 33 | Height A | Width B | Depth C | Outline Dwg. |
| | | | | Pri. | Sec. | | | | | |
| 3.0 | 76-0603SH | 140 | 0 | 7.2 | 8.3 | 7 | 14.00 | 16.00 | 7.75 | 1 |
| 6.0 | 76-0606SH | 212 | 0 | 14.4 | 16.6 | 7 | 18.00 | 20.00 | 9.50 | 1 |
| 9.0 | 76-0609SH | 265 | 0 | 21.6 | 25 | 7 | 18.00 | 20.00 | 9.50 | 1 |
| 15 | 43-6615SH* | 230 | 6 | 36.1 | 41 | 8 | 23.50 | 18.88 | 18.5 | 2 |
| 25 | 43-6625SH* | 255 | 6 | 60 | 69 | 8 | 29.00 | 24.25 | 20.88 | 2 |
| 30 | 43-6630SH* | 326 | 6 | 72 | 83 | 8 | 29.00 | 24.25 | 20.88 | 2 |
| 45 | 43-6645SH* | 460 | 6 | 108 | 125 | 8 | 29.00 | 24.25 | 20.88 | 2 |

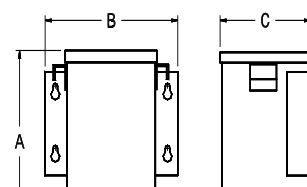
* Meets DOE TP-1 requirements

Connection Diagrams may be found on Pg. 33

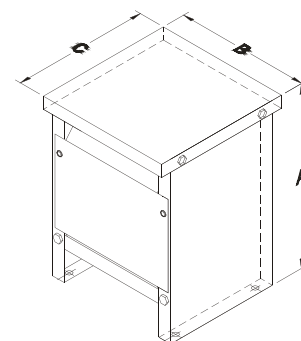
Tap Configurations:

0 = No Taps
2 = 1 - 5% FCAN, 1 - 5% FCBN
4 = 2 - 2½% FCAN, 2 - 2½% FCBN
6 = 2 - 2½% FCAN, 4 - 2½% FCBN

Dimensions & weights may change. Consult factory for certified drawings.



Drawing 1
3 - 9 kVA
Wall Mount - Encapsulated - NEMA Type 3R



Drawing 2
15 - 150 kVA
Floor Mount - Ventilated - NEMA Type 3R

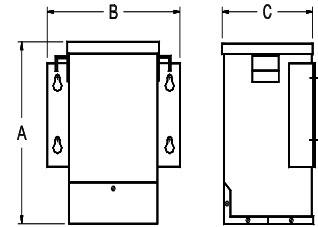
Three Phase - General Purpose

Ventilated Scott Connected

**Primary Volts 480 Delta,
Secondary Volts 240 Delta, 60 Hz**

May be used on a 480Y / 277 Volt Supply

| General Information | | | Winding Specifications | | | | Dimensions | | | |
|---------------------|----------------|----------|------------------------|--------------|------|------------------|------------|---------|---------|--------------|
| kVA Cap. | Catalog Number | Wgt. Lbs | Taps | Maximum Amps | | Conn Dia. Pg. 32 | Height A | Width B | Depth C | Outline Dwg. |
| | | | | Pri. | Sec. | | | | | |
| 3.0 | 63-0203 | 65 | 0 | 3.6 | 7.2 | 1 | 15.75 | 6.63 | 5.88 | 3 |
| 6.0 | 63-0206 | 98 | 0 | 7.2 | 14.4 | 1 | 20.25 | 7.69 | 6.75 | 3 |
| 9.0 | 63-0209 | 164 | 0 | 10.8 | 21.6 | 1 | 25.63 | 7.69 | 6.75 | 3 |

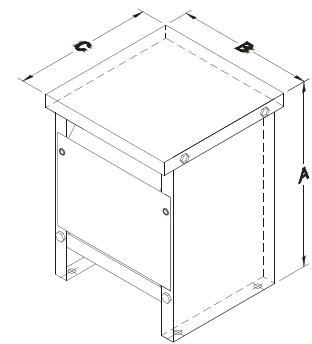


Drawing 1
3 - 9 kVA
Wall Mount - Encapsulated -
NEMA Type 3R

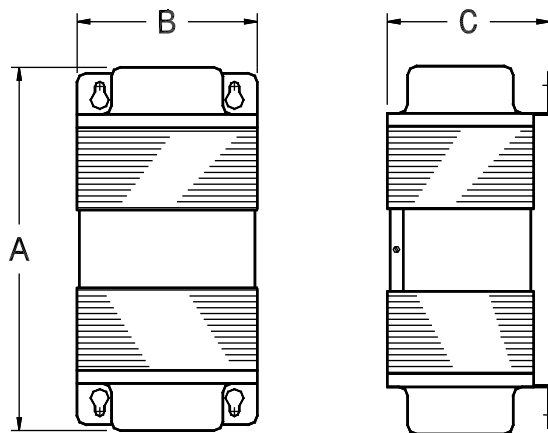
**Primary Volts 480 Delta,
Secondary Volts 208Y / 120, 60 Hz**

May be used on a 480Y / 277 Volt Supply

| General Information | | | Winding Specifications | | | | Dimensions | | | |
|---------------------|----------------|----------|------------------------|--------------|------|------------------|------------|---------|---------|--------------|
| kVA Cap. | Catalog Number | Wgt. Lbs | Taps | Maximum Amps | | Conn Dia. Pg. 32 | Height A | Width B | Depth C | Outline Dwg. |
| | | | | Pri. | Sec. | | | | | |
| 3.0 | 63-0303 | 65 | 0 | 3.6 | 8.3 | 4 | 15.75 | 6.63 | 5.88 | 3 |
| 6.0 | 63-0306 | 98 | 0 | 7.2 | 16.6 | 4 | 20.25 | 7.69 | 6.75 | 3 |
| 9.0 | 63-0309 | 164 | 0 | 10.8 | 25.0 | 4 | 25.63 | 7.69 | 6.75 | 3 |



Drawing 2
15 - 150 kVA
Floor Mount - Ventilated - NEMA Type 3R



Drawing 3
3 - 9 kVA, Scott Connected
Wall Mount - Ventilated - NEMA Type 3R

Connection Diagrams may be found on Pg. 32

Tap Configurations:

- 0 = No Taps
- 2 = 1 - 5% FCAN, 1 - 5% FCBN
- 4 = 2 - 2½% FCAN, 2 - 2½% FCBN
- 6 = 2 - 2½% FCAN, 4 - 2½% FCBN

Dimensions & weights may change. Consult factory for certified drawings.

Three Phase - General Purpose

Additional voltage combinations available



| General Information | | | | | | | | |
|---------------------|----------------|----------------|----------------|----------------|----------------|----------------|-------------------|--------------|
| Pri. | 208 Δ | 208 Δ | 380 Δ | 380 Δ | 380 Δ | 400 Δ | Wgt. (lbs) 60 Hz. | Outline Dwg. |
| Sec. | 208Y/120 | 480Y/277 | 208Y/120 | 240 Δ | 480 Δ | 220Y/127 | | |
| Hz. | 60 | 60 | 50/60* | 50/60 | 50/60 | 50/60 | | |
| kVA Cap. | Catalog Number | Catalog Number | Catalog Number | Catalog Number | Catalog Number | Catalog Number | | |
| 3 | 76-3-1161SH | 76-3-704SH | 76-3-407 | 76-3-594 | 76-3-834 | 76-3-2993 | 140 | 1 |
| 6 | 76-6-1161SH | 76-6-704SH | 76-6-407 | 76-6-594 | 76-6-834 | 76-6-2993 | 212 | 1 |
| 9 | 76-9-1161SH | 76-9-704SH | 76-9-407 | 76-9-594 | 76-9-834 | 76-9-2993 | 265 | 1 |
| 15 | 43-15-615SH* | 43-15-565SH* | 63-15-407 | 63-15-594 | 63-15-834 | 63-15-2993 | 230 | 2 |
| 30 | 43-30-615SH* | 43-30-565SH* | 63-30-407 | 63-30-594 | 63-30-834 | 63-30-2993 | S/B 236 | 2 |
| 45 | 43-45-615SH* | 43-45-565SH* | 63-45-407 | 63-45-594 | 63-45-834 | 63-45-2993 | S/B 400 | 2 |
| 75 | 43-75-615SH* | 43-75-565SH* | 63-75-407 | 63-75-594 | 63-75-834 | 63-75-2993 | 722 | 2 |
| 112.5 | 43-112-615SH* | 43-112-565SH* | 63-112-407 | 63-112-594 | 63-112-834 | 63-112-2993 | 1001 | 2 |
| 150 | 43-150-615SH* | 43-150-565SH* | 63-150-407 | 63-150-594 | 63-150-834 | 63-150-2993 | 1255 | 2 |

* Meets DOE TP-1 requirements

| General Information | | | | | | | | |
|---------------------|----------------|----------------|----------------|----------------|----------------|----------------|-------------------|--------------|
| Pri. | 415 Δ | 415 Δ | 480 Δ | 600 Δ | 600 Δ | 400 Δ | Wgt. (lbs) 60 Hz. | Outline Dwg. |
| Sec. | 208Y/120 | 240 Δ | 480Y/277 | 380Y/220 | 480Y/277 | 600Y/347 | | |
| Hz. | 50/60* | 50/60* | 60 | 60 | 60 | 50/60* | | |
| kVA Cap. | Catalog Number | Catalog Number | Catalog Number | Catalog Number | Catalog Number | Catalog Number | | |
| 3 | 76-3-3117 | 76-3-730 | 76-3-264SH | 76-3-1937 | 76-3-2995SH | 76-3-2996 | 140 | 1 |
| 6 | 76-6-3117 | 76-6-730 | 76-6-264SH | 76-6-1937 | 76-6-2995SH | 76-6-2996 | 212 | 1 |
| 9 | 76-9-3117 | 76-9-730 | 76-9-264SH | 76-9-1937 | 76-9-2995SH | 76-9-2996 | 265 | 1 |
| 15 | 63-15-3117 | 63-15-730 | 43-15-512SH* | 43-15-1937* | 43-15-1354SH* | 63-15-2996 | 230 | 2 |
| 30 | 63-30-3117 | 63-30-730 | 43-30-512SH* | 43-30-1937* | 43-30-1354SH* | 63-30-2996 | 326 | 2 |
| 45 | 63-45-3117 | 63-45-730 | 43-45-512SH* | 43-45-1937* | 43-45-1354SH* | 63-45-2996 | 460 | 2 |
| 75 | 63-75-3117 | 63-75-730 | 43-75-512SH* | 43-75-1937* | 43-75-1354SH* | 63-75-2996 | 722 | 2 |
| 112.5 | 63-112-3117 | 63-112-730 | 43-112-512SH* | 43-112-1937* | 43-112-1354SH* | 63-112-2996 | 1001 | 2 |
| 150 | 63-150-3117 | 63-150-730 | 43-150-512SH* | 43-150-1937* | 43-150-1354SH* | 63-150-2996 | 1255 | 2 |

50/60 Hz. units are approximately 20% heavier than 60 Hz. unit weights shown.

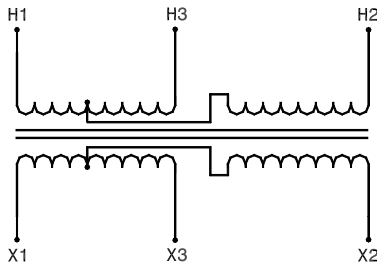
* Meets DOE TP-1 requirements

**Connection Diagrams furnished upon request.
Please consult the factory or your Dongan® Representative
for price, delivery and dimensions.**

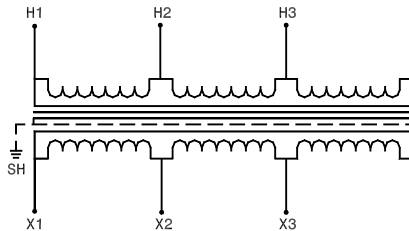
Dongan® specializes in rapid delivery of nonstandard kVA, voltage and tap configurations. Send us your request today for a competitive quote on transformers not specifically listed in this catalog.

Three Phase Connection Diagrams

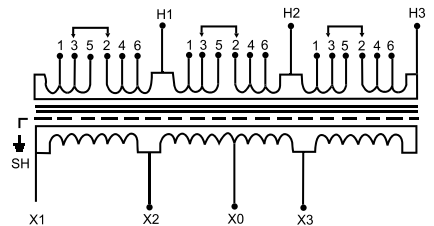
| Dia. 1 | | Catalog Series 63-02XX | |
|--------------------------|------------------|------------------------|-------------------------------|
| Tap Arrangement: No Taps | | | |
| % High Voltage | High Voltage 480 | Inter-Connect | Connect High Voltage Lines To |
| 100 | 480 | | H1 & H2 & H3 |
| % Low Voltage | Low Voltage 240 | Inter-Connect | Connect Low Voltage Lines To |
| 100 | 240 | | X1 & X2 & X3 |



| Dia. 2 | | Catalog Series 76-02XXSH | |
|--------------------------|------------------|--------------------------|-------------------------------|
| Tap Arrangement: No Taps | | | |
| % High Voltage | High Voltage 480 | Inter-Connect | Connect High Voltage Lines To |
| 100 | 480 | | H1 & H2 & H3 |
| % Low Voltage | Low Voltage 240 | Inter-Connect | Connect Low Voltage Lines To |
| 100 | 240 | | X1 & X2 & X3 |

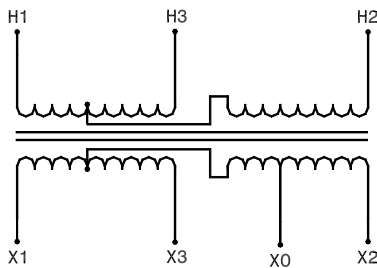


| Dia. 3 | | Catalog Series 63-62XXSH | |
|---|------------------|--------------------------|-------------------------------|
| Tap Arrangement: 2 - 2 1/2 FCAN (Full Capacity Above Normal) 4 - 2 1/2 FCBN (Full Capacity Below Normal) | | | |
| % High Voltage | High Voltage 480 | Inter-Connect | Connect High Voltage Lines To |
| 105 | 504 | 2 to 5 | |
| 102.5 | 492 | 4 to 5 | |
| 100 | 480 | 2 to 3 | |
| 97.5 | 468 | 3 to 4 | H1 & H2 & H3 |
| 95 | 456 | 3 to 6 | |
| 92.5 | 444 | 1 to 4 | |
| 90 | 432 | 1 to 6 | |
| % Low Voltage | Low Voltage 240 | Inter-Connect | Connect Low Voltage Lines To |
| 100 | 240 | | X1 & X2 & X3 |
| 100 | 120* | | X2, X0 or X3, X0 |

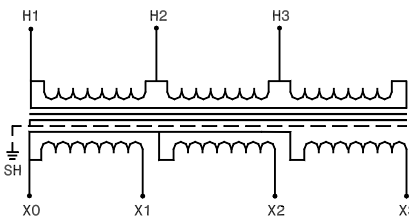


*Lighting tap capacity is limited to 5% of nameplate rating distributed equally on either side of X0.

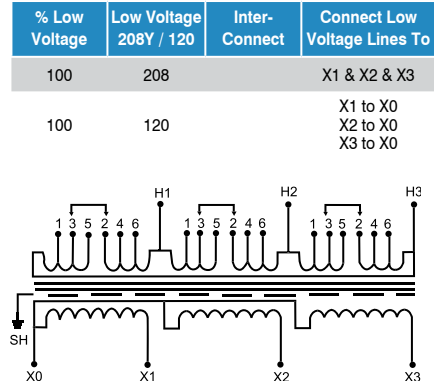
| Dia. 4 | | Catalog Series 63-03XX | |
|--------------------------|------------------------|------------------------|----------------------------------|
| Tap Arrangement: No Taps | | | |
| % High Voltage | High Voltage 480 | Inter-Connect | Connect High Voltage Lines To |
| 100 | 480 | | H1 & H2 & H3 |
| % Low Voltage | Low Voltage 208Y / 120 | Inter-Connect | Connect Low Voltage Lines To |
| 100 | 208 | | X1 & X2 & X3 |
| 100 | 120 | | X1 to X0 X2 to X0 X3 to X0 |



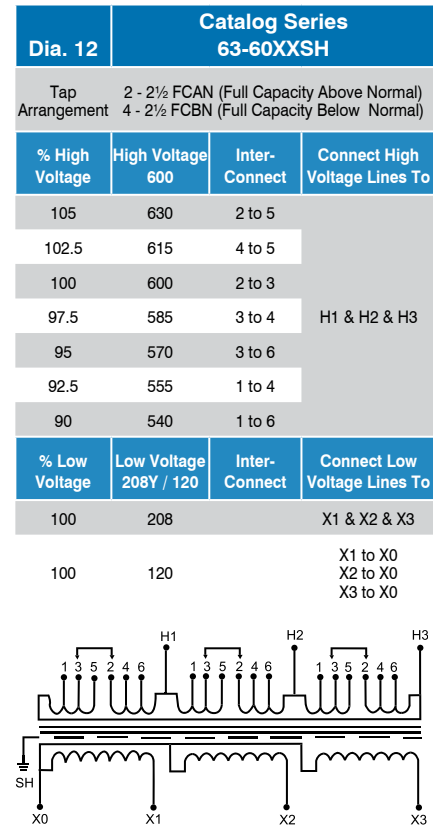
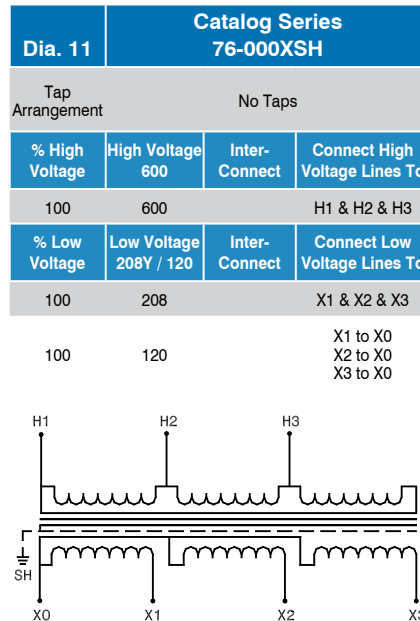
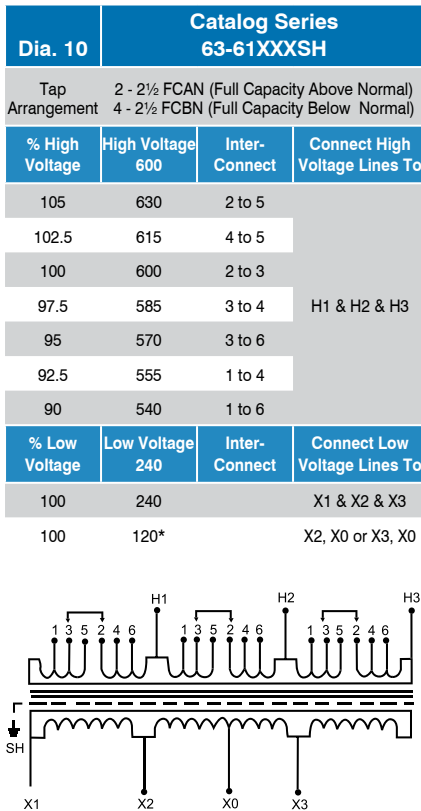
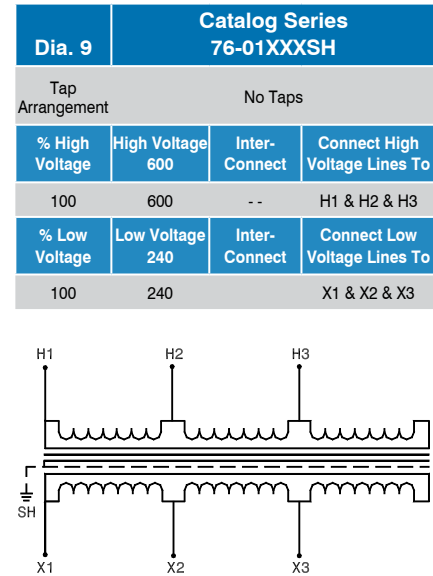
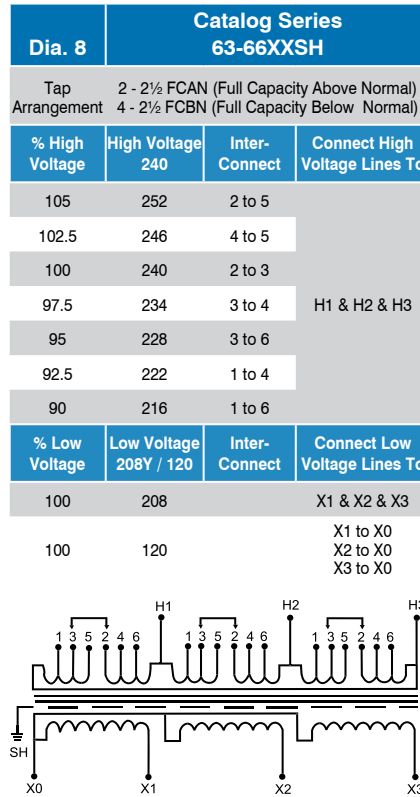
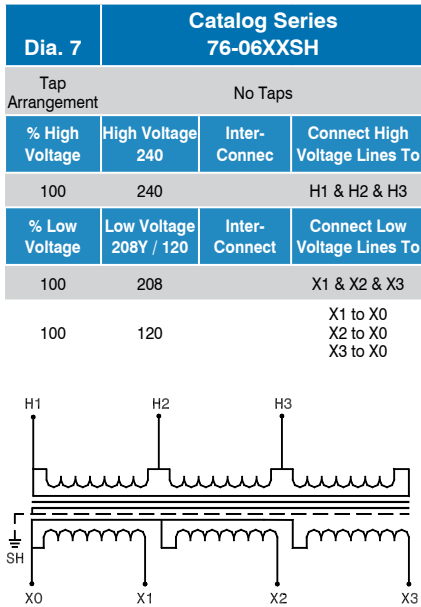
| Dia. 5 | | Catalog Series 76-03XXSH | |
|--------------------------|------------------------|--------------------------|----------------------------------|
| Tap Arrangement: No Taps | | | |
| % High Voltage | High Voltage 480 | Inter-Connect | Connect High Voltage Lines To |
| 100 | 480 | | H1 & H2 & H3 |
| % Low Voltage | Low Voltage 208Y / 120 | Inter-Connect | Connect Low Voltage Lines To |
| 100 | 208 | | X1 & X2 & X3 |
| 100 | 120 | | X1 to X0 X2 to X0 X3 to X0 |



| Dia. 6 | | Catalog Series 63-63XXSH | |
|---|------------------|--------------------------|-------------------------------|
| Tap Arrangement: 2 - 2 1/2 FCAN (Full Capacity Above Normal) 4 - 2 1/2 FCBN (Full Capacity Below Normal) | | | |
| % High Voltage | High Voltage 480 | Inter-Connect | Connect High Voltage Lines To |
| 105 | 504 | 2 to 5 | |
| 102.5 | 492 | 4 to 5 | |
| 100 | 480 | 2 to 3 | |
| 97.5 | 468 | 3 to 4 | H1 & H2 & H3 |
| 95 | 456 | 3 to 6 | |
| 92.5 | 444 | 1 to 4 | |
| 90 | 432 | 1 to 6 | |



Three Phase Connection Diagrams



*Lighting tap capacity is limited to 5% of nameplate rating distributed equally on either side of X0.

Three Phase - General Purpose

Series 76 - Large capacity encapsulated transformers

Series 76 Three Phase Isolation Transformers offer all the advantages of encapsulated transformers - in larger kVA sizes. These transformers are particularly well suited to harsher environments where airborne contaminants may adversely effect ventilated, dry type transformers.

Available in 600 and 480 volt primaries, these transformers feature a 115°C temperature rise, 200°C insulation system, electrostatic shields, and copper windings. The core and coil are completely epoxy-silica encapsulated for protection against environmental contaminants.

Transformers in this series are available in additional voltage combinations and NEMA Type 4, stainless steel enclosures for petrochemical or marine applications. Consult your Dongan® Representative or the factory for price and delivery.

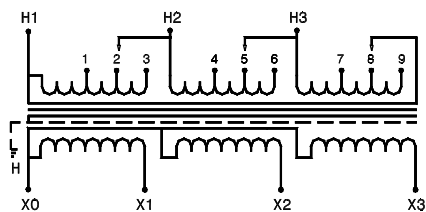
Features



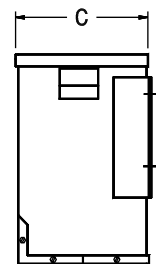
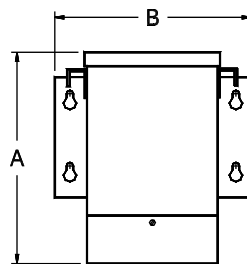
- NEMA Type 3R, indoor / outdoor enclosure.
- Copper wound, 115°C temperature rise.
- Epoxy-silica encapsulated construction.
- Featuring three phase 600 or 480 volt Delta primary windings with a secondary winding of 208Y/120.
- Special order options include stainless steel enclosures.

| General Information | | | | Winding Specifications | | | | Dimensions | | | | |
|---------------------|---------------|---------------|-----|------------------------|--------------|------------|---------------|-------------------------------------|----------|---------|---------|------------|
| kVA Cap. | Pri. 600 Δ | Pri. 480 Δ | Hz. | Taps | Maximum Amps | | | Wall Mount (WM) Floor Mount (FM) | Height A | Width B | Depth C | Wgt. (lbs) |
| | Sec. 208Y/120 | Sec. 208Y/120 | | | Pri. 600 D | Pri. 480 D | Sec. 208Y/120 | | | | | |
| | Catalog No. | Catalog No. | | | | | | | | | | |
| 15 | 76-2015SH | 76-2315SH | 60 | 2 | 14.4 | 18.0 | 41.6 | WM | 18.00 | 20.00 | 9.50 | 220 |
| 25 | 76-2025SH | 76-2325SH | 60 | 2 | 24.0 | 30.0 | 69.3 | FM | 27.50 | 20.75 | 19.50 | 380 |
| 30 | 76-2030SH | 76-2330SH | 60 | 2 | 28.9 | 36.1 | 83.0 | FM | 27.50 | 20.75 | 19.50 | 425 |
| 45 | 76-2045SH | 76-2345SH | 60 | 2 | 43.3 | 54.0 | 125.0 | FM | 27.50 | 20.75 | 19.50 | 550 |
| 75 | 76-2075SH* | 76-2375SH | 60 | 2 | 72.0 | 90.0 | 208 | FM | 34.75 | 34.00 | 23.00 | 950 |

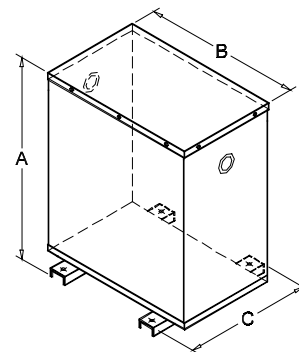
*75 kVA is not UL Listed.



Wiring Diagram - 76 Series



15 kVA
Wall Mount -
Encapsulated - NEMA Type 3R



25 - 75 kVA
Floor Mount - Encapsulated - NEMA Type 3R

Three Phase - General Purpose

Series LTF & LTH - Low temperature rise, 80°C and 115°C

Series LTF and LTH Transformers are three phase, low temperature rise, air cooled, general purpose distribution transformers. These transformers feature either an 80°C temperature rise or a 115°C temperature rise with a 220°C insulation system and all are shielded. They are designed for applications where cool operating temperatures or thermal overload requirements are demanded.

Thermal overload capability of 15% to 30% is built in because these units are designed to operate with a maximum rise of 150°C. This means units with an 80°C rise have a 70°C thermal reserve and units with a 115°C rise have a 35°C thermal reserve. These features insure a long life where moderate thermal or capacity overloads exist.

Features



- NEMA Type 3R, indoor / outdoor enclosure.
- 80°C and 115°C temperature rise units.
- 220°C Insulation system.
- Featuring three phase, 480 volt Delta primary windings with a secondary winding of 208Y/120.
- Special order options include 600 and 240 volt primaries.
- 60 Hertz.

Connection Diagrams may be at bottom of page.

Tap Configurations:

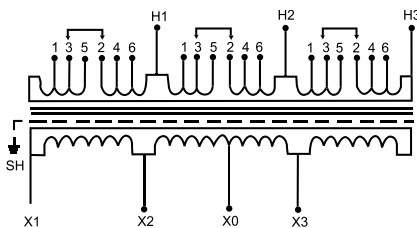
0 = No Taps
 2 = 1 - 5% FCAN, 1 - 5% FCBN
 4 = 2 - 2½% FCAN, 2 - 2½% FCBN
 6 = 2 - 2½% FCAN, 4 - 2½% FCBN

Dimensions & weights may change. Consult factory for certified drawings.

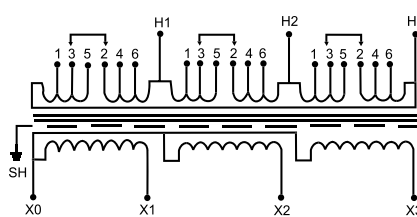
General Information

| kVA Cap. | Pri. 480 Δ | | Height A | Width B | Depth C | Wgt. (lbs) | Taps | Pri. 480 Δ | | Height A | Width B | Depth C | Wgt. (lbs) | Taps |
|-------------|--------------|---------------|-------------|------------|------------|---------------|------|---------------|---------------|-------------|------------|------------|---------------|------|
| | Sec. 240 Δ | Sec. 208Y/120 | | | | | | Sec. 240 Δ | Sec. 208Y/120 | | | | | |
| | Catalog No. | Catalog No. | | | | | | Catalog No. | Catalog No. | | | | | |
| 9 | 63-LTF209SH | 63-LTF309SH | 29.00 | 24.25 | 20.88 | 280 | 6 | 63-LTH209SH | 63-LTH309SH | 23.50 | 18.88 | 18.50 | 245 | 6 |
| 15 | 43-LTF215SH* | 43-LTF315SH* | 29.00 | 24.25 | 20.88 | 300 | 6 | 43-LTH215SH* | 43-LTH315SH* | 29.00 | 24.25 | 20.88 | 280 | 6 |
| 25 | 43-LTF225SH* | 43-LTF325SH* | 29.00 | 24.25 | 20.88 | 450 | 6 | 43-LTH225SH* | 43-LTH325SH* | 29.00 | 24.25 | 20.88 | 300 | 6 |
| 30 | 43-LTF230SH* | 43-LTF330SH* | 32.00 | 27.25 | 26.25 | 580 | 6 | 43-LTH230SH* | 43-LTH330SH* | 29.00 | 24.25 | 20.88 | 450 | 6 |
| 45 | 43-LTF245SH* | 43-LTF345SH* | 41.00 | 34.25 | 26.75 | 1000 | 6 | 43-LTH245SH* | 43-LTH345SH* | 32.00 | 27.25 | 26.25 | 580 | 6 |
| 75 | 43-LTF275SH* | 43-LTF375SH* | 41.00 | 34.25 | 26.75 | 1200 | 6 | 43-LTH275SH* | 43-LTH375SH* | 41.00 | 34.25 | 26.75 | 1000 | 6 |
| 112.5 | | | | | | | | 43-LTH2112SH* | 43-LTH3112SH* | 41.00 | 34.25 | 26.75 | 1200 | 6 |
| 80° Rise | | | | | | | | 115°C Rise | | | | | | |

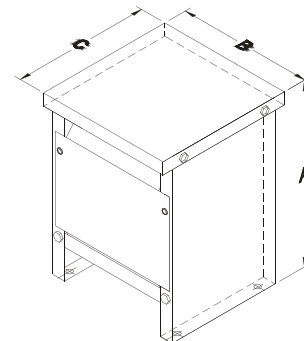
* Meets DOE TP-1 requirements



Wiring Diagram -
480 Delta, 240 Delta



Wiring Diagram -
480 Delta, 208Y/120



Series LTF & LTH
Floor Mount - Ventilated - NEMA Type 3R

*Lighting tap capacity is limited to 5% of nameplate rating distributed equally on either side of X0.